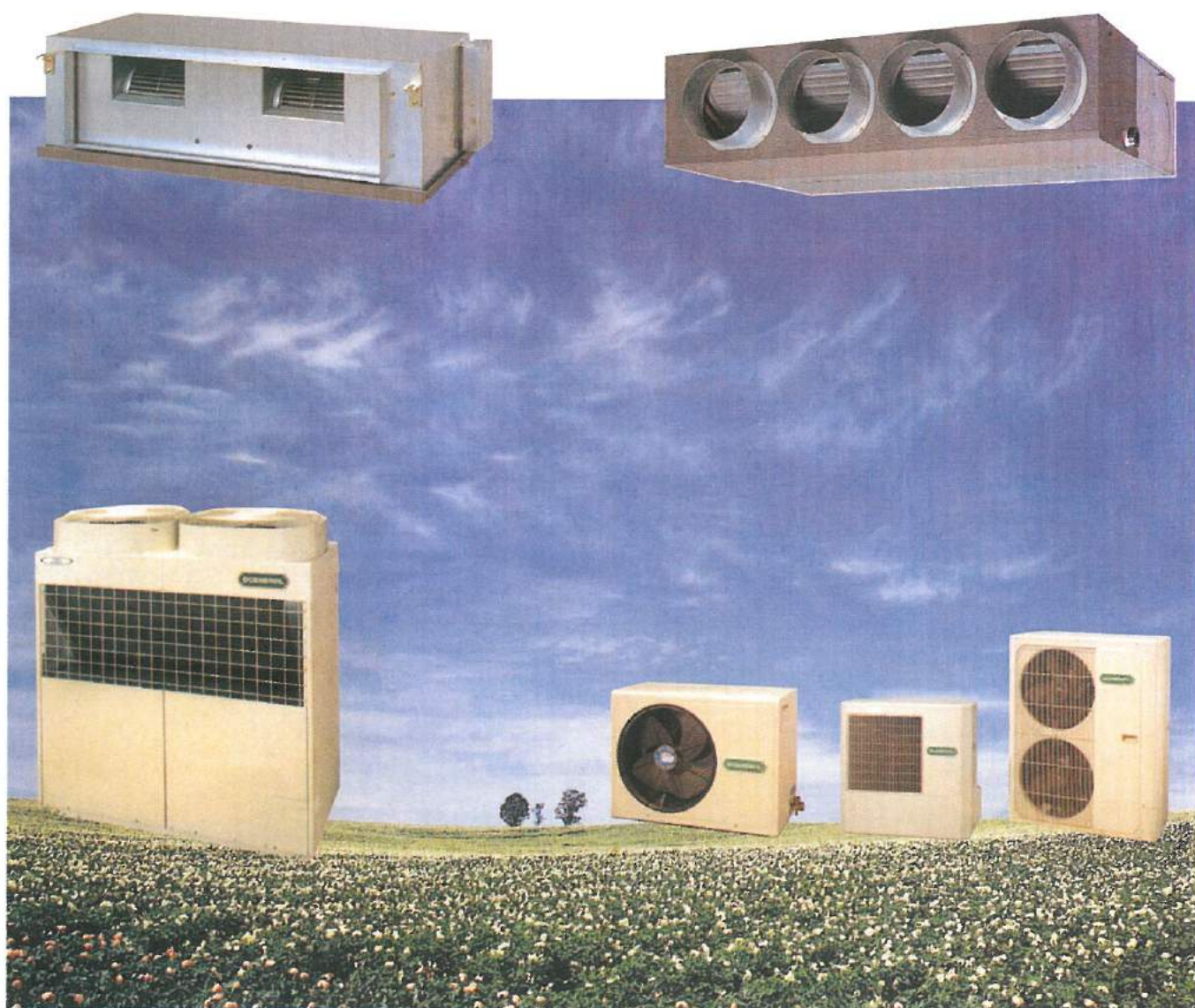


GENERAL

DUCT SPLIT TYPE AIR CONDITIONER



FUJITSU GENERAL LIMITED

SPECIFICATIONS (ARG60A)

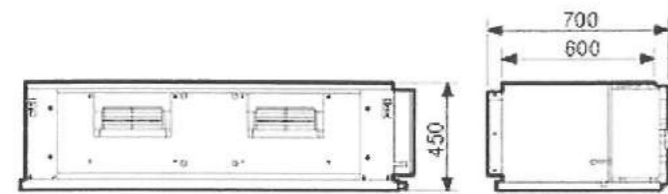
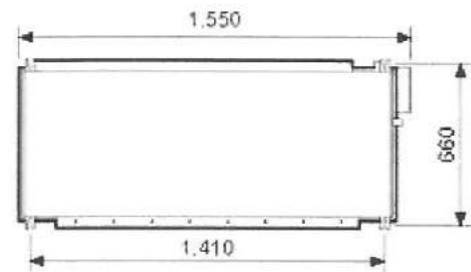
TYPE				DUCTED MODELS		
MODEL NAME		INDOOR		COOLING TYPE		
		OUTDOOR		ARG60AUAK		
POWER SOURCE				AOG60APAGT		
AVAILABLE VOLTAGE RANGE				3N - 380-415V 50Hz		
				3N - 342-456V 50Hz		
CAPACITY	COOLING	RATED		kW	19.15	
				BTU/h	65,330	
INPUT POWER	HEATING	RATED		kW	-	
				BTU/h	-	
CURRENT	COOLING	RATED		A	9.8	
					-	
STARTING CURRENT	HEATING	RATED		A	79	
					-	
EER	COOLING			kW/kW	2.83-2.88	
COP	HEATING				-	
MOISTURE REMOVAL				l/h (pints/h)	6.5	
AIR CIRCULATION COOL/HEAT (AT 240V)	INDOOR	High	CFM		2149	
		Med		2019		
	Low	1861				
	OUTDOOR	High		3472		
Low		-				
FAN SPEED COOL/HEAT (AT 240V)	INDOOR	High	r.p.m		1300	
		Med		1135		
	Low	960				
	OUTDOOR	High		800		
Low		-				
FAN TYPE x Q'ty		INDOOR			Sirocco x 2	
		OUTDOOR			Propeller x 2	
FAN MOTOR OUTPUT		INDOOR		W	59	
		OUTDOOR			539	
NOISE LEVEL (SOUND PRESSURE) COOL/HEAT (AT 240V)	INDOOR	High	dB(A)		49	
		Med		45		
	Low	42				
	OUTDOOR			58.5		
COMPRESSOR		TYPE			SCROLL	
		OUTPUT		W	5040	
HEAT EXCHANGER TYPE	INDOOR	Coil			Copper Tube	
		Fin			Aluminum fin	
		Rows x Stages x Fin Pitch	mm		4 x 14 x 1.80	
		Coil Dimensions	mm		355.6 x 890.0 x 76.2	
	OUTDOOR	Coil			Copper Tube	
		Fin			Aluminum fin	
		Rows x Stages x Fin Pitch	mm		(2x26x1.8) x 2 pieces	
		Coil Dimensions	mm		660.0 x 975.0 x 38.1	
CASING COLOR		INDOOR			Steel sheet	
		OUTDOOR			Powder Coated(10YR7.5/1.0NN)	
DIMENSIONS H x W x D	INDOOR			mm	400 x 1050 x 500	
	OUTDOOR	NET			1355 x 940 x 370	
WEIGHT	INDOOR	NET / GROSS		kg(lbs)	50.0 (110.0)	
	OUTDOOR				121.0 (267.0)	
PIPE	CONNECTION METHOD				FLARE	
	SIZE	LIQUID		mm	9.53 (3/8 inc.)	
		GAS				19.05 (3/4 inc.)
	MAX LENGTH				m	50
	MAX HEIGHT				m	30
REFRIGERANT		TYPE			R22	
		CHARGE		kg	3.8	
REFRIGERANT OIL		TYPE			Mineral oil	
OPERATION(OUTDOOR)	COOLING			°C	0 to 52	
	HEATING				-	
REMOTE CONTROLLER TYPE					WIRED	
DRAIN PIPE	MATERIAL				SGCC-N-M-O Z22 T0.8	
	COATING				Hot dip zinc - coated steel	
	INSULATION					Polyethylene Foams Sheet

SPECIFICATIONS (ARG90E)

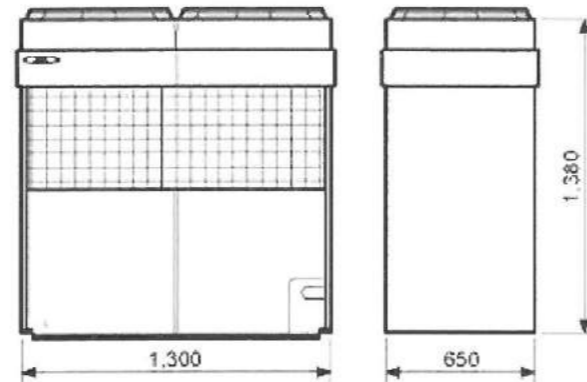
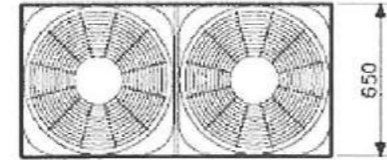
TYPE				DUCTED MODELS		
MODEL NAME		INDOOR		COOLING TYPE		
		OUTDOOR		ARG90E		
POWER SOURCE				AOG90EP		
AVAILABLE VOLTAGE RANGE				3N - 380-415V 50Hz		
				3N - 342-456V 50Hz		
CAPACITY	COOLING	RATED		kW	28	
				BTU/h	95,290	
INPUT POWER	HEATING	RATED		kW	-	
				BTU/h	-	
CURRENT	COOLING	RATED		A	10.5	
					-	
STARTING CURRENT	HEATING	RATED		A	17	
					-	
EER	COOLING			kW/kW	63	
COP	HEATING				2.42	
MOISTURE REMOVAL				l/h (pints/h)	7.5	
AIR CIRCULATION COOL/HEAT (AT 240V)	INDOOR	High	CFM		2919.00	
		Med		-		
	Low	-				
	OUTDOOR	High		3413		
Low		-				
FAN SPEED COOL/HEAT (AT 240V)	INDOOR	High	r.p.m		1140	
		Med		-		
	Low	-				
	OUTDOOR	High		730		
Low		-				
FAN TYPE x Q'ty		INDOOR			Sirocco	
		OUTDOOR			2	
FAN MOTOR OUTPUT		INDOOR		W	150 x 2	
		OUTDOOR			580	
NOISE LEVEL (SOUND PRESSURE) COOL/HEAT (AT 240V)	INDOOR	High	dB(A)		49	
		Med		45		
	Low	42				
	OUTDOOR			58.5		
COMPRESSOR		TYPE			SCROLL	
CASING COLOR		INDOOR			Steel sheet	
		OUTDOOR			Powder Coated(10YR7.5/1.0NN)	
DIMENSIONS H x W x D	INDOOR			mm	450 x 1550 x 700	
	OUTDOOR	NET			1380 x 1300 x 650	
WEIGHT	INDOOR	NET / GROSS		kg(lbs)	85.0 (187.0)	
	OUTDOOR				243.0 (535.0)	
PIPE	CONNECTION METHOD				FLANGE (1 1/8") - FLARE (1/2")	
	SIZE	LIQUID		mm	1 2 inc.	
		GAS				1 1/8 inc.
	MAX LENGTH				m	50
	MAX HEIGHT				m	30
REFRIGERANT		TYPE			R407C	
OPERATION(OUTDOOR)		COOLING		°C	0 to 52	
		HEATING			-	
REMOTE CONTROLLER TYPE					WIRED	
DRAIN PIPE	MATERIAL				SGCC-N-M-O Z22 T0.8	
	COATING				Hot dip zinc - coated steel	
	INSULATION					Polyethylene Foams Sheet

■ MODELS : AR*90A / AR*90R

■ INDOOR UNIT

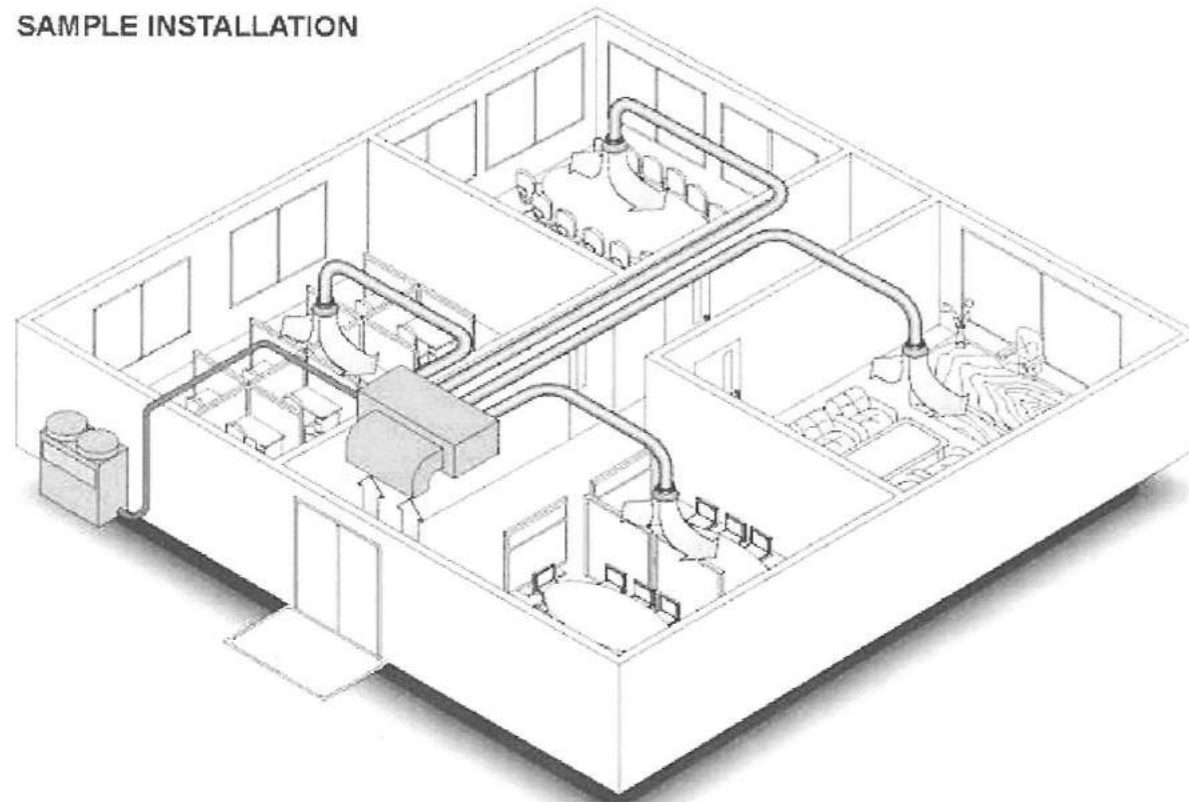


■ OUTDOOR UNIT



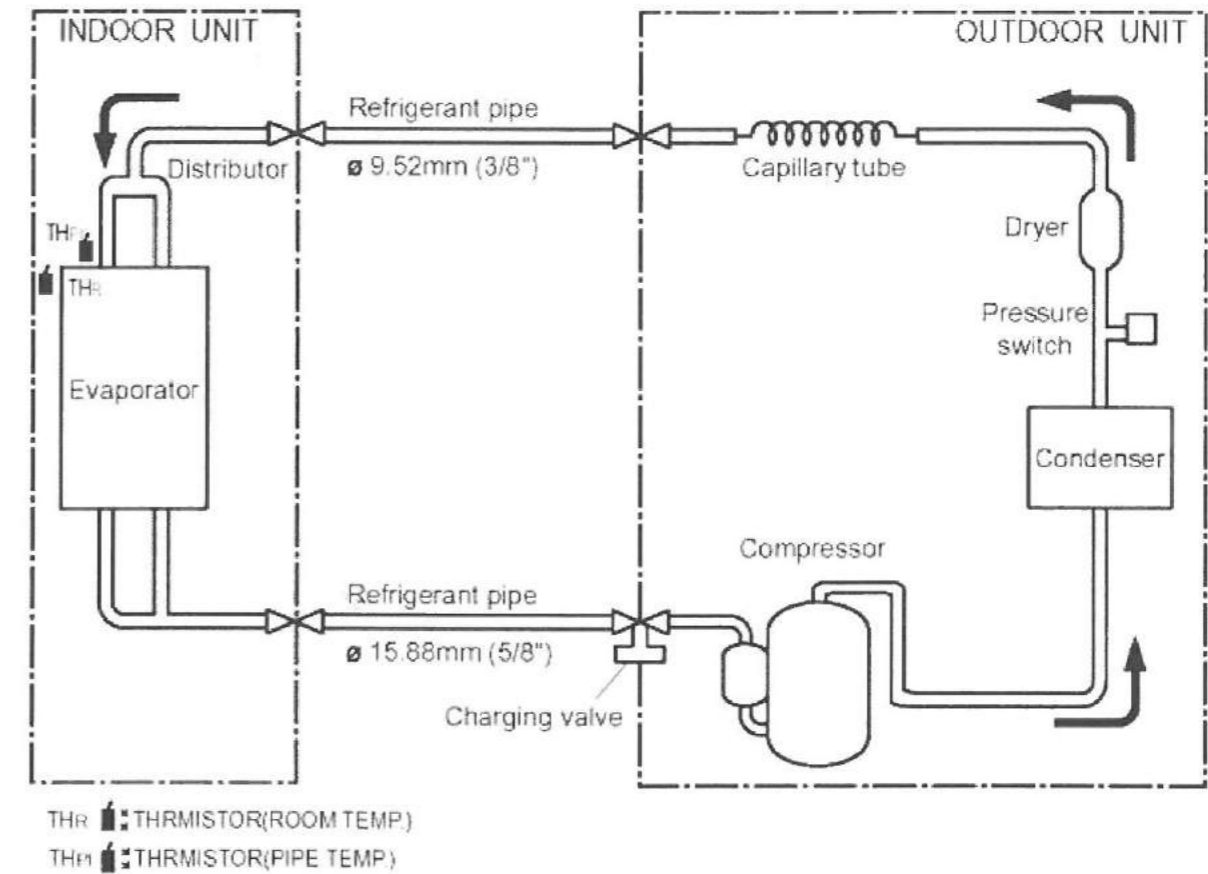
(Unit : mm)

● SAMPLE INSTALLATION



REFRIGERANT CIRCUIT

■ MODELS : ARG18A / AOG18A



DUCT TYPE
AR18A - AR25A

■ MODELS : AR*25A / AO*25A

